



Quick™ Tools

March 2008

6pm Ltd., 6pm House,
188, 21st September Avenue, Naxxar, NXR1012, MALTA
T: +356 21 489 657 F: +356 21 489 653
Co. Reg. No.: C27657
www.6pmmalta.com

6pm Management Consultancy(UK) Ltd
212, Piccadilly, London W1J 9HG, UK
T: +44 (0)20 7917 6772 F:+44 (0)20 79176773
Co. Reg. No.: 5240808
www.6pmuk.com

6pm Ltd. and 6pm Management Consultancy(UK) Ltd. are wholly owned subsidiaries of 6pm Holdings p.l.c



Contents

- Quick™ Tools i
- 1. Background 3
 - 1.1 Who we are..... 3
 - 1.2 Quick™ Tools 3
- 2. Product Overview 4
 - 2.1 Quick™ UI 4
 - 2.2 Quick™ BI..... 5
- 3. Quick™ Facilitated Workshop..... 7
 - 3.1 Pre Facilitated Workshop 7
 - 3.2 The Facilitated Workshop..... 7

1. Background

1.1 Who we are

Established in 1996, 6pm is an energetic and dynamic company with an ethos that encapsulates honesty, flexibility, commitment, urgency and transparency. Over the years, 6pm has partnered with its customers across the globe and provided them with tools and techniques to conquer four business challenges, namely, Reducing Time to Market, Reducing Overall Cost, Increasing Productivity and Improving Quality.

Employing more than 100 technology consultants in Malta and the UK, our staff are committed to exceeding the expectations of our clients at all times and their enthusiasm coupled with their “can do” attitude is the envy of many competitors.

We provide:

- ☞ **IT Services** which encompass Flexible Resourcing and Project Services, Bespoke Application Development, Testing, Support and Maintenance, as well as Agile Consultancy with a focus on a benefit driven DSDM framework.
- ☞ **Business Intelligence** expertise and services (BusinessObjects Gold Partner, Axle Studio Worldwide Support Partner)
- ☞ **IT Solutions** including our Quick™ suite of prototyping products, BusinessObjects™, AXLE™ Studio (a revolutionary Business Intelligence tool new to the market), and Enterprise Security Analytics with Tier 3.

6pm have also launched a suite of products based on Agile processes that enables your delivery team to improve their delivery quality, increase their productivity and reduce their costs. The Quick™ tools stimulate creativity and encourage empowerment through their unique way of engaging with the business users and IT.

With offices in Malta and in the UK, we have offered IT services to a number of international clients such as Capgemini, UK Local and Central government, Fujitsu, Storebrand, Checkfree, Conchango and BT.

6pm UK and 6pm Malta are wholly owned subsidiaries of 6pm Holdings PLC.

1.2 Quick™ Tools

6pm Ltd. has been engaged on several agile roll-out projects and is very much focussed on the concepts of Dynamic Systems Development Methodology (DSDM) in the UK. DSDM focuses on developing quality solutions which deliver immediate business benefit to an organisation.

The objectives above together with 6pm’s experience in developing and delivering business solutions, led to the development of Quick™ suite of tools.

The first productivity tool produced by 6pm was Quick™ UI formerly known as AXLE Prototyping, in 2002/2003. Quick™ UI is a evolutionary requirements specification gathering tool that brings the business together with IT through powerful workshop sessions Quick™ UI provides an opportunity to the business community and developers to flush out more of the project requirements earlier in the project lifecycle and at a faster rate.

During 2003/2004 a Business Intelligence unit was setup within 6pm. This led to the idea of developing a tool that would facilitate BI report requirement gathering in the same way as Quick™ UI did for application development.

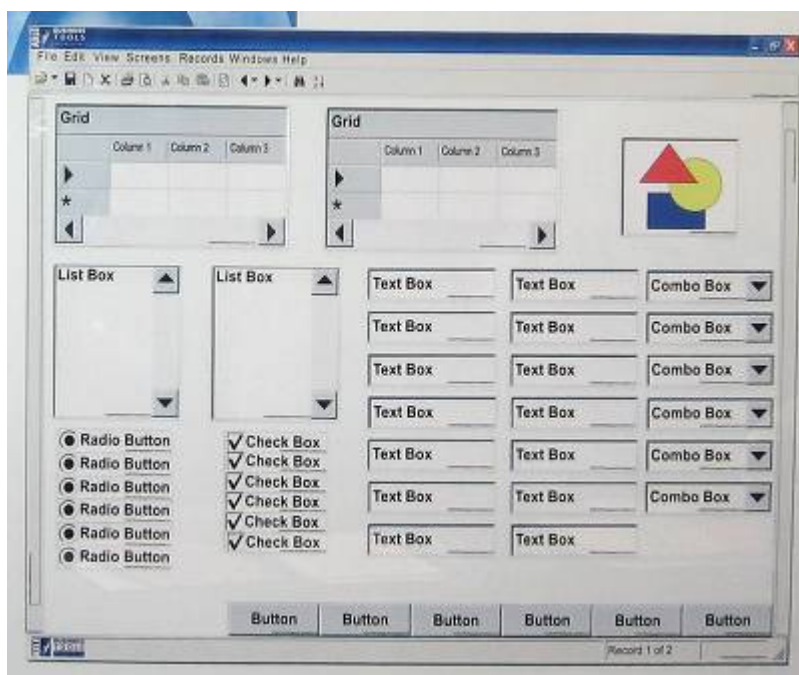
The Quick™ BI powerbase, by 6pm, provides a powerful tool which best manifests itself within an Agile process making use of powerful workshop sessions. A Quick™ BI facilitated workshop guarantees that organisations will be able to reduce the time it takes to place their business intelligence reports in the production environment and enable senior management make more effective “on time” business decisions.

2. Product Overview

2.1 Quick™ UI

Quick™ UI is an evolutionary prototyping solution that delivers immediate business benefit with minimal implementation costs. It is not just another tool or technique – it is a new concept that empowers the business to drive IT by way of combing workshops and evolutionary prototyping development into one empowered session.

The Quick™ UI powerbase stimulates creativity and encourages empowerment through its unique way of engaging with the business users and IT and enables them to work together in a climate were communication, visibility, ownership and involvement are the ingredients at the foundation of this powerbase.



The tool enables business and IT resources to define, discuss and agree the front end usability functionality.

Quick™ UI allows users to establish their requirements through workshops, using whiteboards and the Quick™ magnetic set.

Digital photographs are then taken of the forms put together on the whiteboards. These are imported into the Quick™ software which in turn auto-generates the functional specifications, the screen designs in a variety of languages such as Java, .NET or VB, and the XML database schema.

In this way a delivery team will be able to capture the form design, form navigation and validation rules, quality acceptance criteria and business rules.

The net result is a usable prototype for demonstration purposes only as well as a detailed requirements document in MS word format.

2.2 Quick™ BI

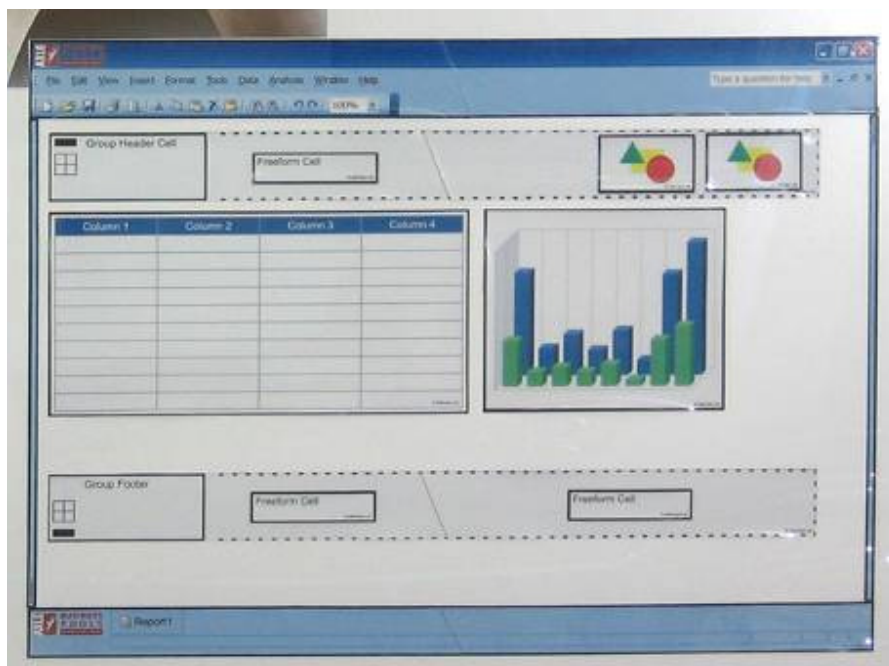
Business Intelligence reporting incurs a substantial cost to a business. It is however estimated that 70% of the reports development cost is down to time consumed in workshops attempting to define the report layout and information requirements.

The Quick™ BI powerbase, by 6pm, is the first tool of its kind that makes use of a simple process and cutting edge technology to provide organisations with a powerful tool which best manifests itself within an Agile process making use of powerful workshop sessions.

A Quick™ BI facilitated workshop guarantees that organisations will be able to reduce the time it takes to place their business intelligence reports in the production environment and enable senior management to make more effective “on time” business decisions.

The Quick™ BI powerbase stimulates creativity and provides clarity through its unique way of engaging with the business users and enforces a collaborative and cooperative approach between all stakeholders that results in effective communication, increased visibility and ownership which are some of the ingredients required to ensure success.

The tool enables business users and IT resources to define, discuss and agree the business intelligence report requirements and capture the report design and data requirements in record time.



Quick™ BI powerbase together with the workshop process packaged as part of the tool, enables organisations to increase the productivity process of producing business decision reports required by senior management, which in turn translates to a cost savings of at least 40%.

Return on investment with Quick™ BI is practically immediate. The tool has a Quick™ no cost implementation phase, and is innovative, easy and simple to use.

Quick™ BI has been developed using the Microsoft .net framework and integrates with BusinessObjects XI. The Quick™ BI kit includes a set of magnetic strips which represent objects on a report, for example diagrams and lists, as well as internally developed software.

How does it work?

Quick™ BI is used in a workshop of business users. A workflow scenario is created using flipcharts and whiteboards. The facilitator's role is to get people up on their feet and interacting with each other to build the reports they would like to have at hand.

Making use of the magnets, the users build the layout together with data items which they would like to see in their reports. For each report depicted on the magnetic whiteboard, a picture is taken using standard digital cameras or a mobile phone and imported to Quick™ BI software to be processed.

After processing, Quick™ BI generates and outputs SQL Server 2000 database, Business Objects universes and reports. The generated universes and reports can then be improved upon to produce the final universes and reports.

During the second iteration the facilitator goes through each report that has been defined and together with the users defines the quality acceptance criteria of the reports. The criteria are noted and captured onto the Quick™ BI software.

The facilitator then engages the users to define the sources of data. These are also captured and recorded on the Quick™ BI software.

The Quick™ BI software is then used to produce 3 deliverables as a result of the workshop:

- A requirements document capturing all that has been agreed during the workshop including report layout, quality acceptance criteria and data sources;
- Prototype Business Objects reports which can be run in a live environment;
- Schema of what data is required.

The main use of Quick™ BI is for report prototyping purposes, and is an important tool to facilitate requirements gathering in a workshop. The fact that the users are building the report layout themselves creates more visibility and greater ownership. Allowing such visibility prior to development bears a number of huge advantages.

The benefits of making use of a facilitated workshop together with the Quick™ BI tool are:

- Reduces time to define requirements;
- Better understanding and more precise requirements;
- Reduces development time as the prototypes produced can be reused in development;
- Increases the Quality of the reports;
- Reduces costs.

3. Quick™ Facilitated Workshop

This Section provides an overview of the process packaged as part of the tool, using Quick UI™ as an example. The power of the Quick™ tools does not lie simply with the underlying technology, but also with the process and methodology of the workshop facilitation surrounding the tools.

3.1 Pre Facilitated Workshop

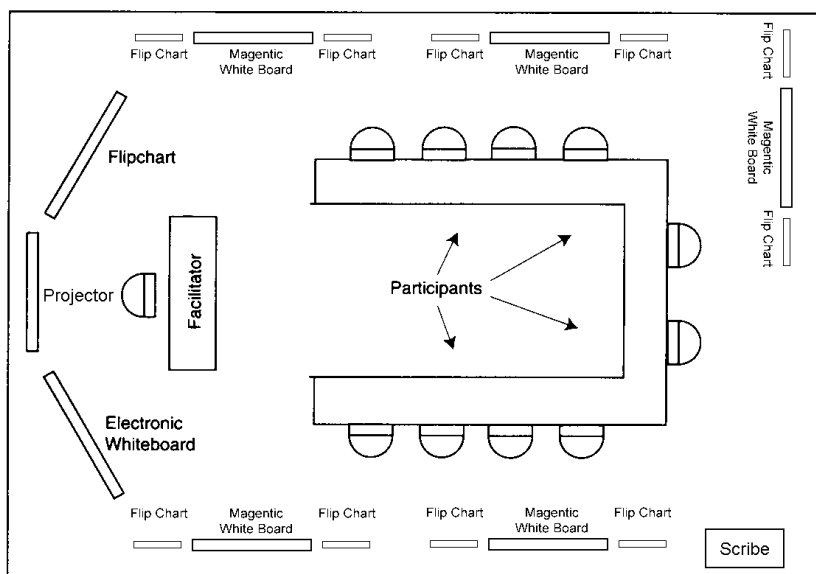
Prior to the workshop, the Quick™ Facilitator will meet with the workshop owner to discuss, define and agree the workshop purpose, prioritise deliverables and to determine who the participants should be. Once this is agreed, the Quick™ Facilitator will create the Workshop Agenda and distribute it to the participants.

The logistics will also include other aspects such as timeline, refreshments, venue and venue setup

The venue would require the following equipment:

- Magnetic Whiteboards
- Flip Charts
- Quick™ tool sets
- Laptop running the Quick™ software
- Projector

It is recommend that seating arrangements be U-Shaped as illustrated in the adjacent diagram.



3.2 The Facilitated Workshop

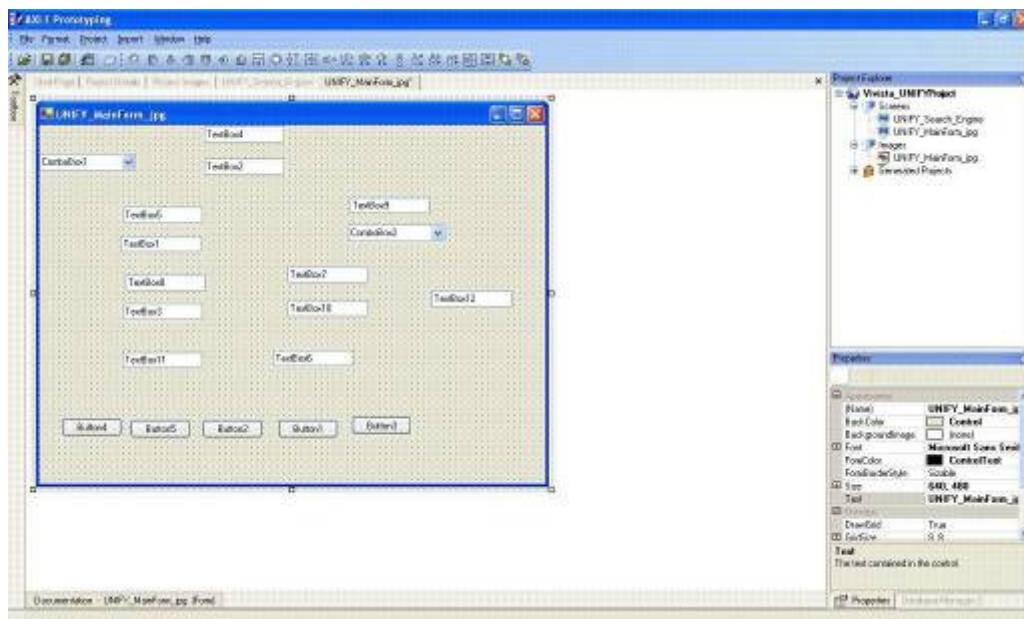
The role of the Quick™ Facilitator is to walk the workshop attendees through the simple steps required in an Quick™ facilitated workshop to ensure that the end result is a requirement specification that captures the users needs and is fit for purpose.

The Quick™ Facilitation Process:

1. The users create the forms they require using the magnets and a white board provided.

The screenshot shows a software interface for creating a requirement specification form. The form is titled 'PEOPLE' and includes fields for 'SURNAME', 'DOB', 'NAME', and 'NICK NAME'. Below this, there is a section for 'VEHICLES' with fields for 'REG.', 'MAKE', 'MODEL', 'COLOUR', '1st Line', '2nd Line', 'Town', and 'Post Cd.'. There is also a 'LOCATION' section with a 'Free Text' field and 'Build ID'. At the bottom, there are 'Date from' and 'To' fields, and a row of buttons: 'Clear', 'Search', 'Cancel', 'NEXT', and 'Previous'. The interface also shows a 'Scribe' button and a 'Record 1 of 2' indicator.

2. The image is captured using a digital camera and imported into Quick™. Once captured, the Quick™ software, translates the pictures into the format seen here:

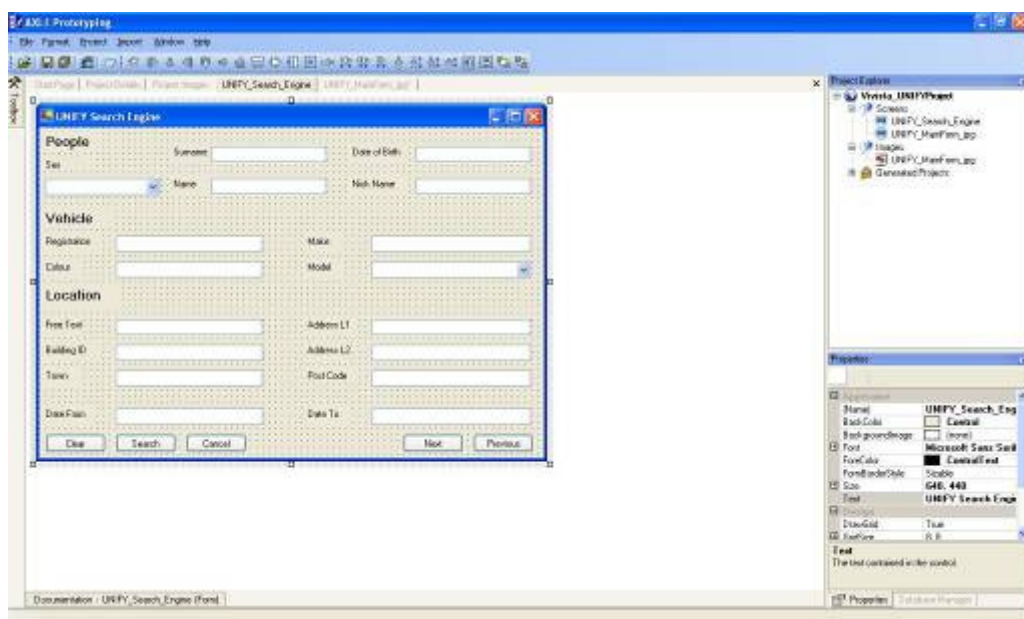


The Quick™ Facilitator will now lead the group through three iterations:

Iteration 1

During the first iteration the look and feel of the form, the navigation rules and exact terminology are agreed upon and the necessary changes are made to the form.

During this iteration, the group will also establish the data links between fields on different forms.



Iteration 2

During the second iteration the business rules are identified and captured in the Quick™ tool. This is illustrated in the figure below:

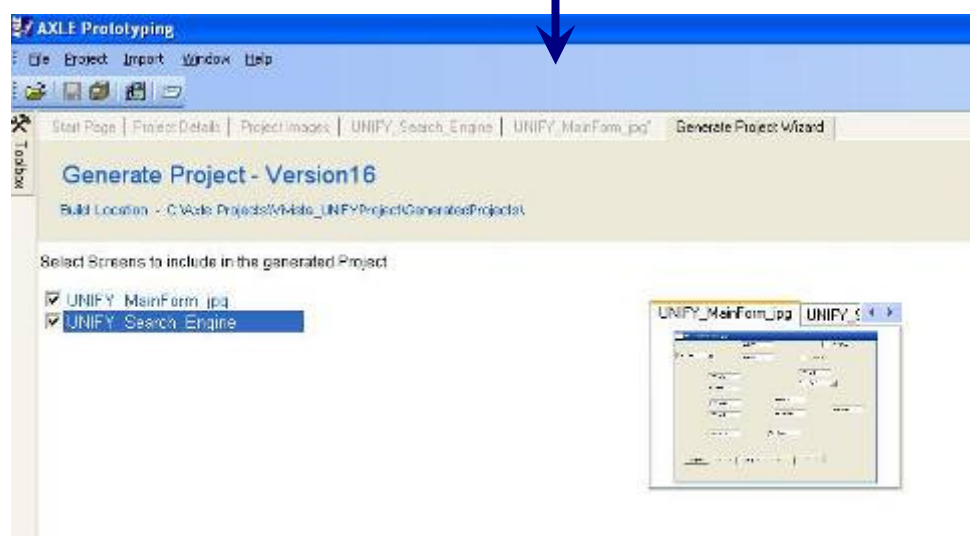
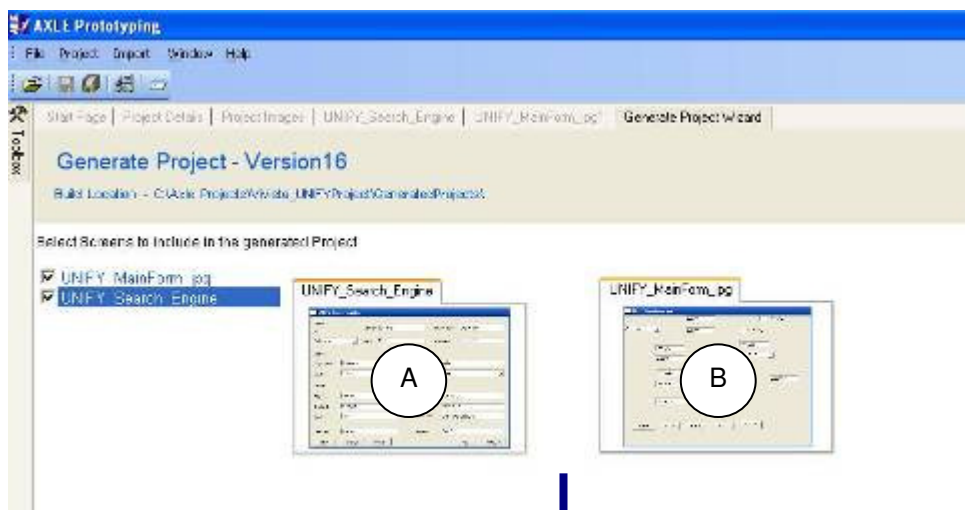


Iteration 3

During the final iteration the quality acceptance criteria for each form are agreed upon and inputted into the Quick™ tool.

Once the relationships between the forms have been mapped these can be created in Quick™ through a simple process of drag and drop.

Simply click on A, drag on to B and drop.



The Working Prototype

At this stage, the technology platform is selected (eg C#, VB.Net etc) and the Quick™ UI Tool Set will create the evolutionary working prototype.



The deliverables of an Quick™ Facilitated workshop would be:

- A working prototype that contains the forms as designed by the business users themselves.
 - A conceptual data model based on the data fields outlined on the forms.
 - An executable prototype and an XML database that can be distributed for review via e-mail as part of the project's communication plan.
 - An auto generated MS Word document that contains the following
 - Snap Shot of the Forms
 - Agreed Business Rules
 - Agreed Quality Acceptance Criteria
- 3.3 Form Characteristics up to field level.

**For further information or a product demonstration please
contact us at info@6pmuk.com**